

安装ASPEN12

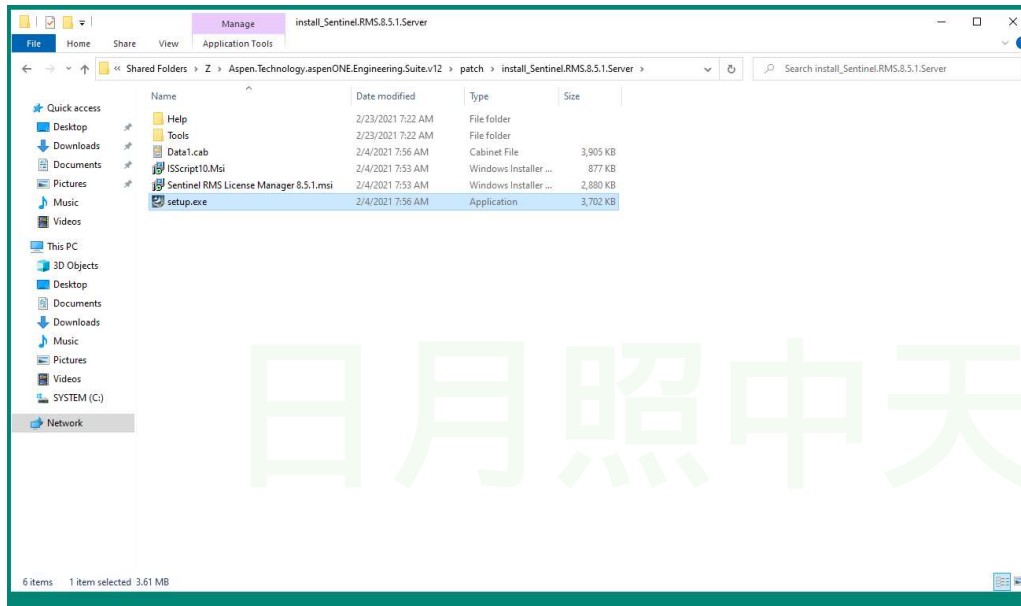
1, 断网。最简单的就是拔网线

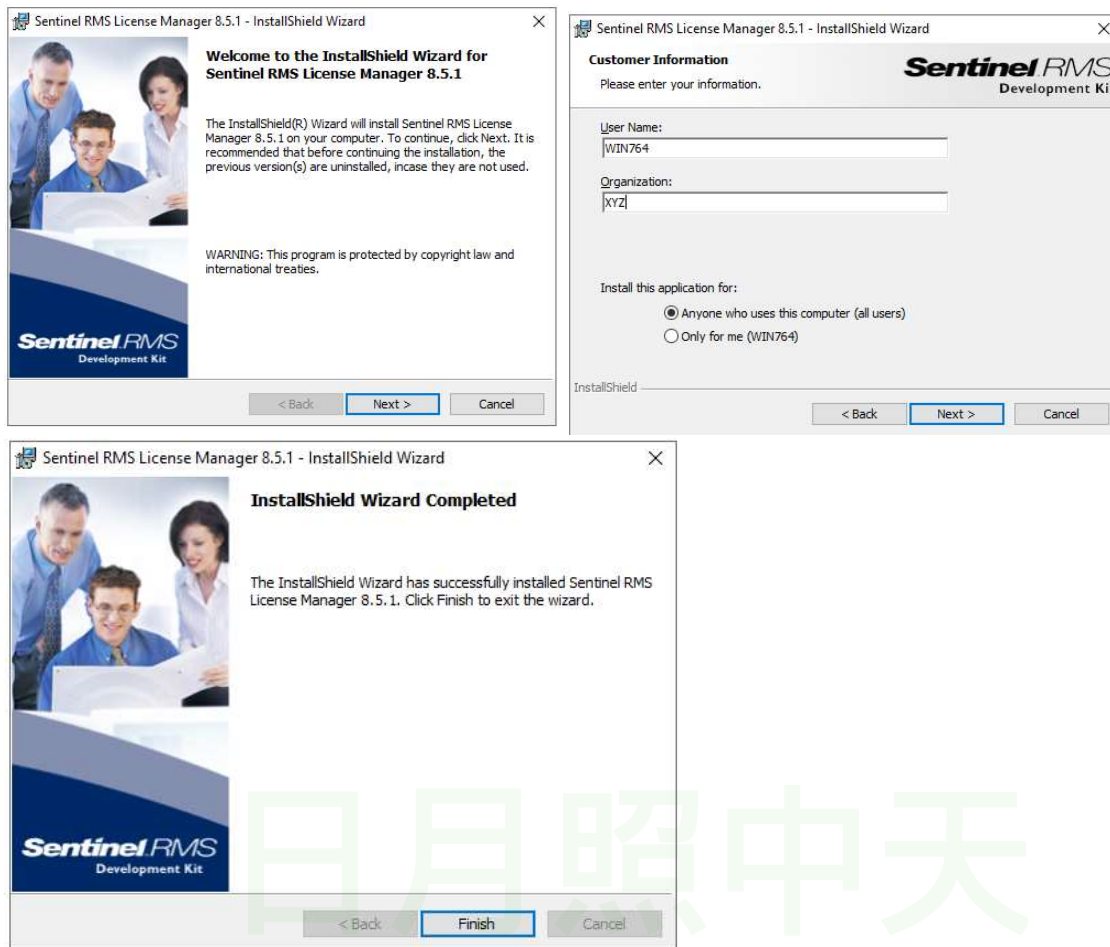
Disable internet connection, but do not turn of networks interfaces.

2, 安装Sentinel RMS v8.5.1 Server

Install Sentinel RMS v8.5.1 Server.

这个东西在下载的东西里边: \patch\install_Sentinel.RMS.8.5.1.Server\setup.exe

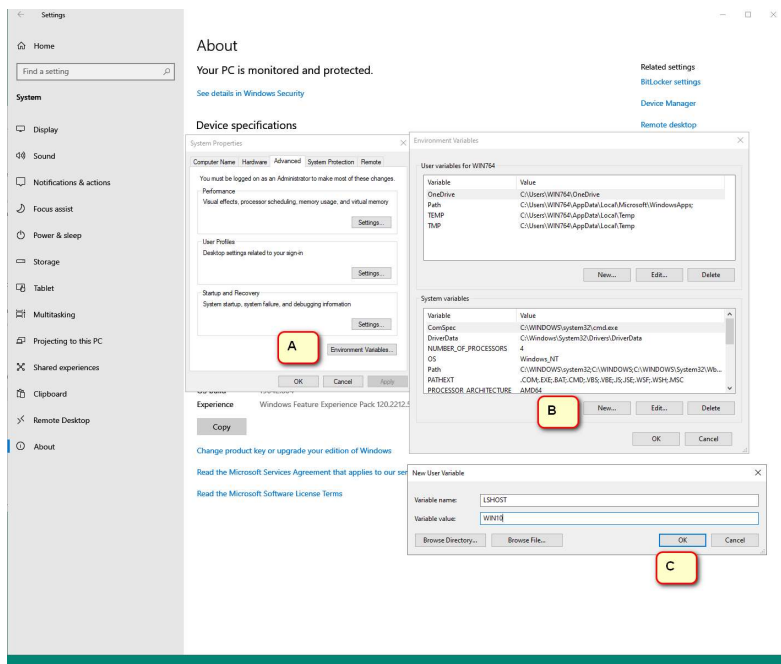




3.创建系统变量。不懂没关系，照猫画虎就行。Create the system variable

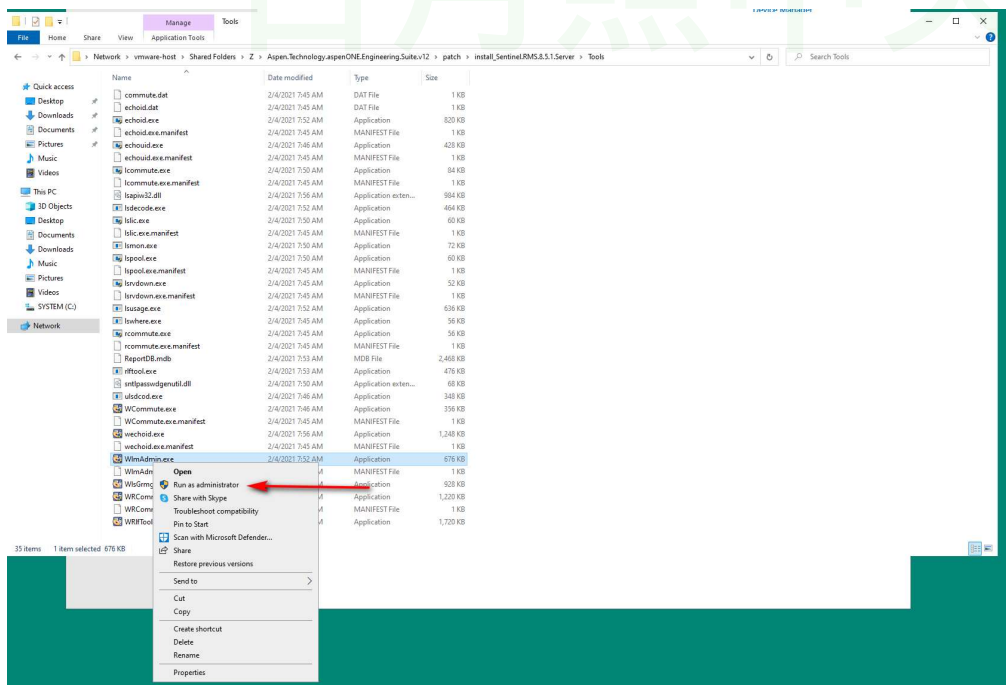
LSHOST={YOURPCNAME}

LSHOST是关键词，不要打错，"WIN10"你计算机的名字(name)，我的计算机名字是WIN10，不要抄！



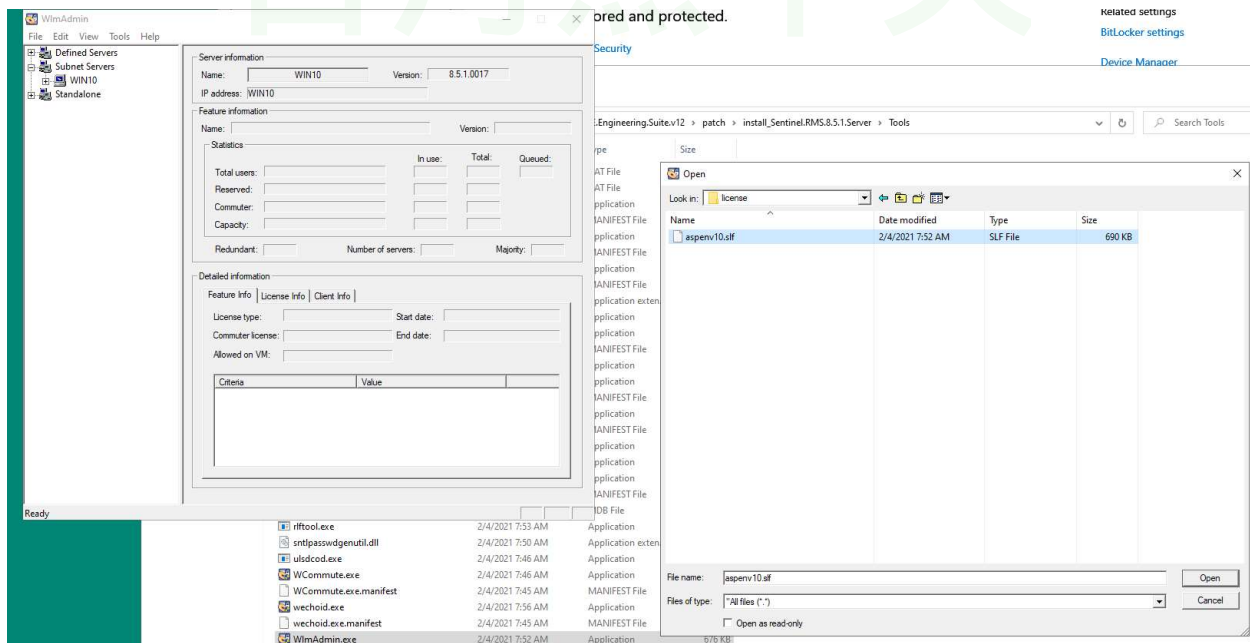
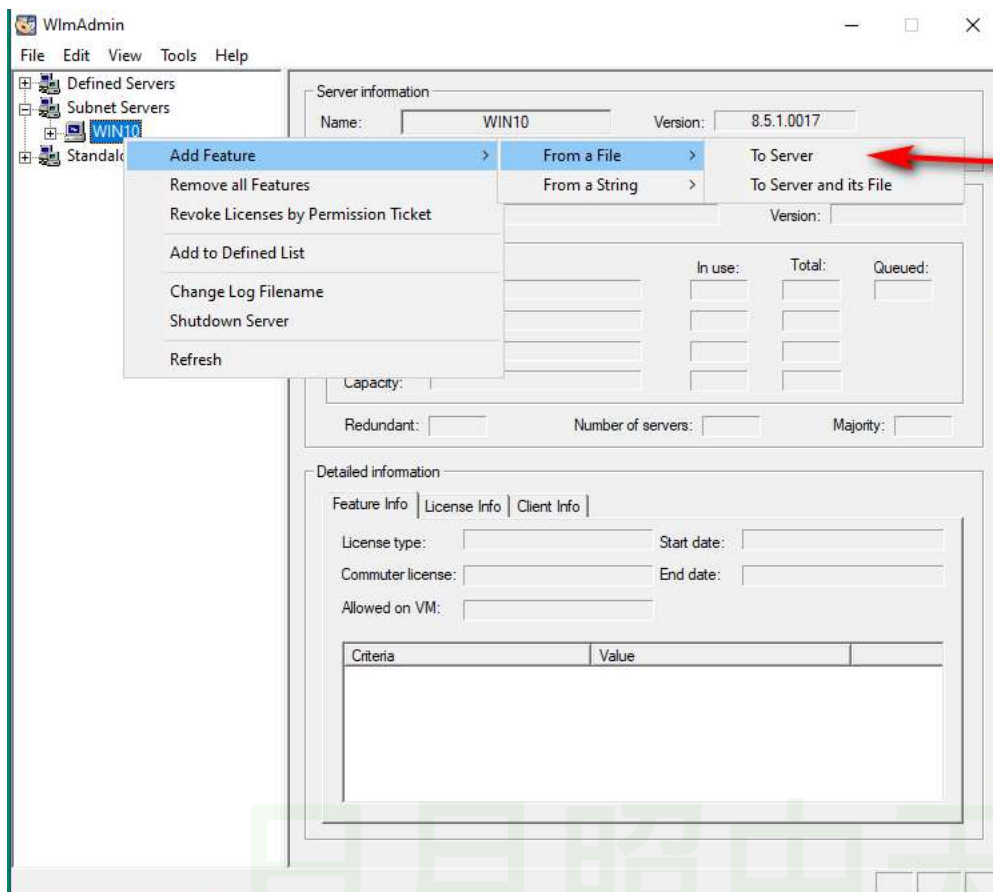
4, 以管理员权限运行\patch\install_Sentinel.RMS.8.5.1.Server\Tools\WlmAdmin.exe

这个东西仍然在下载的东西里边。

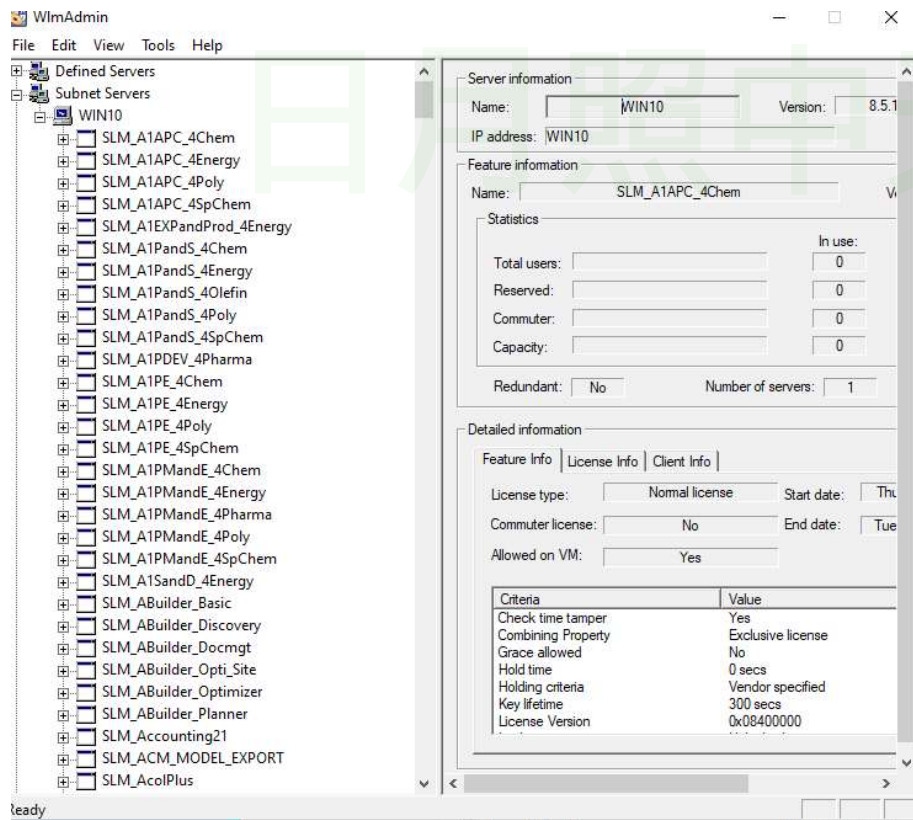
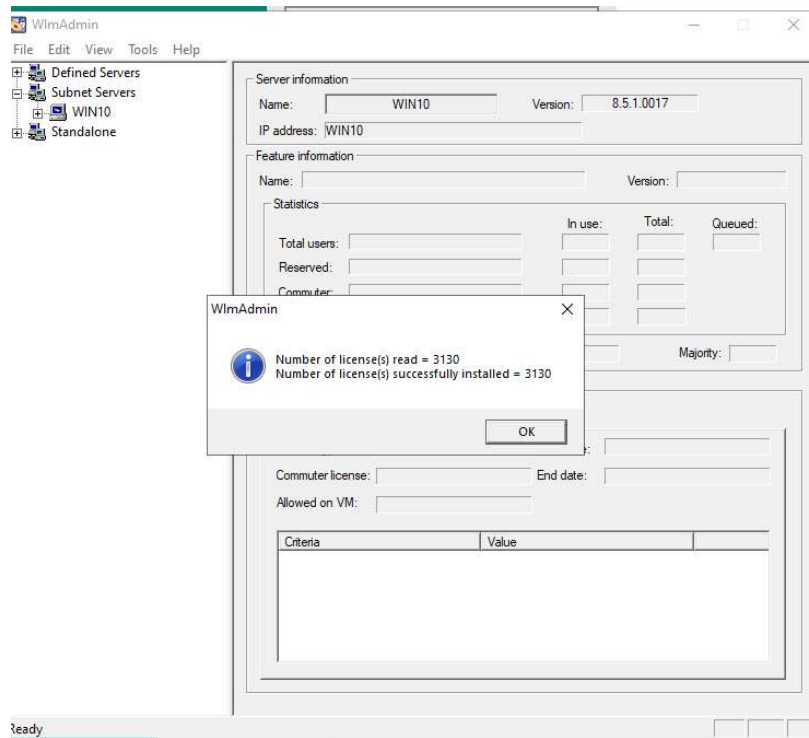


下一步就是加载证

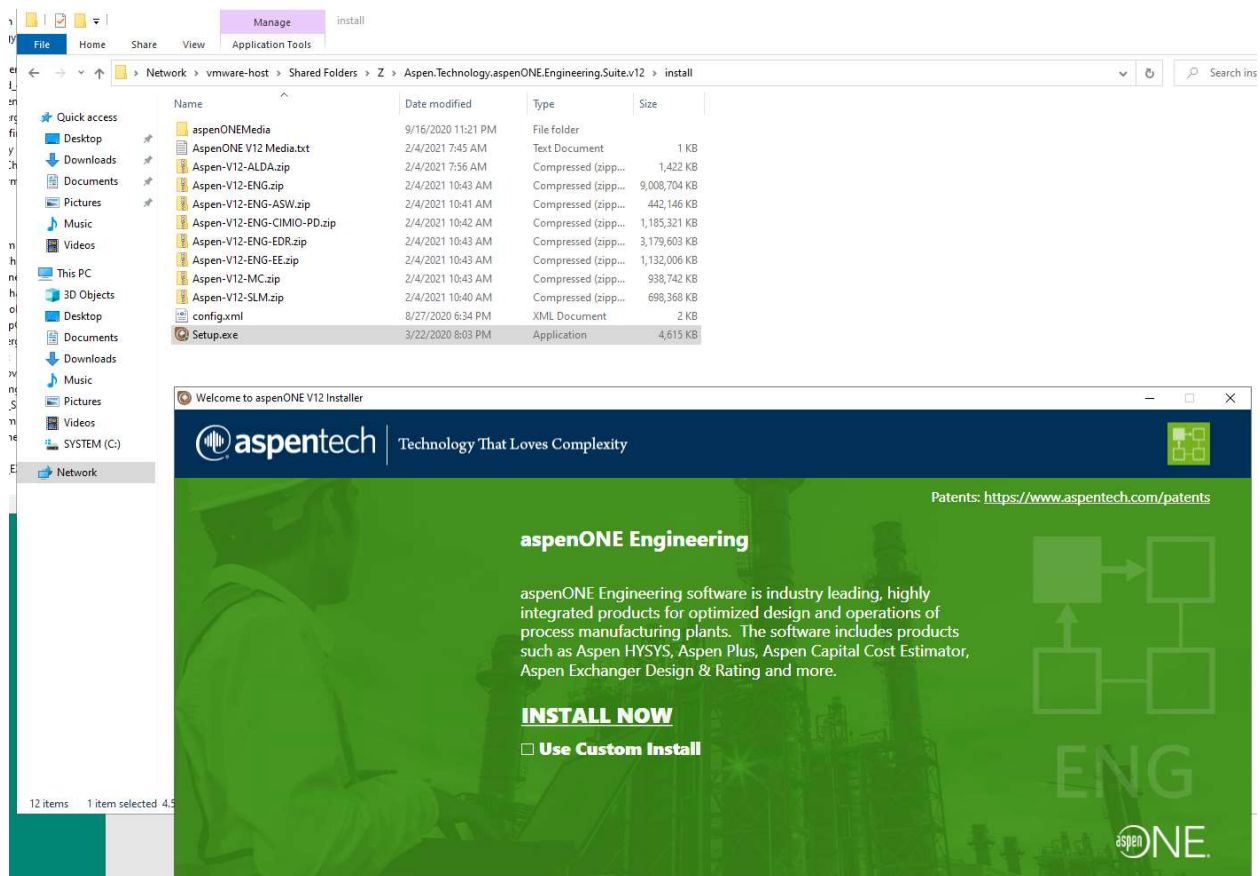
书。照猫画虎就行。

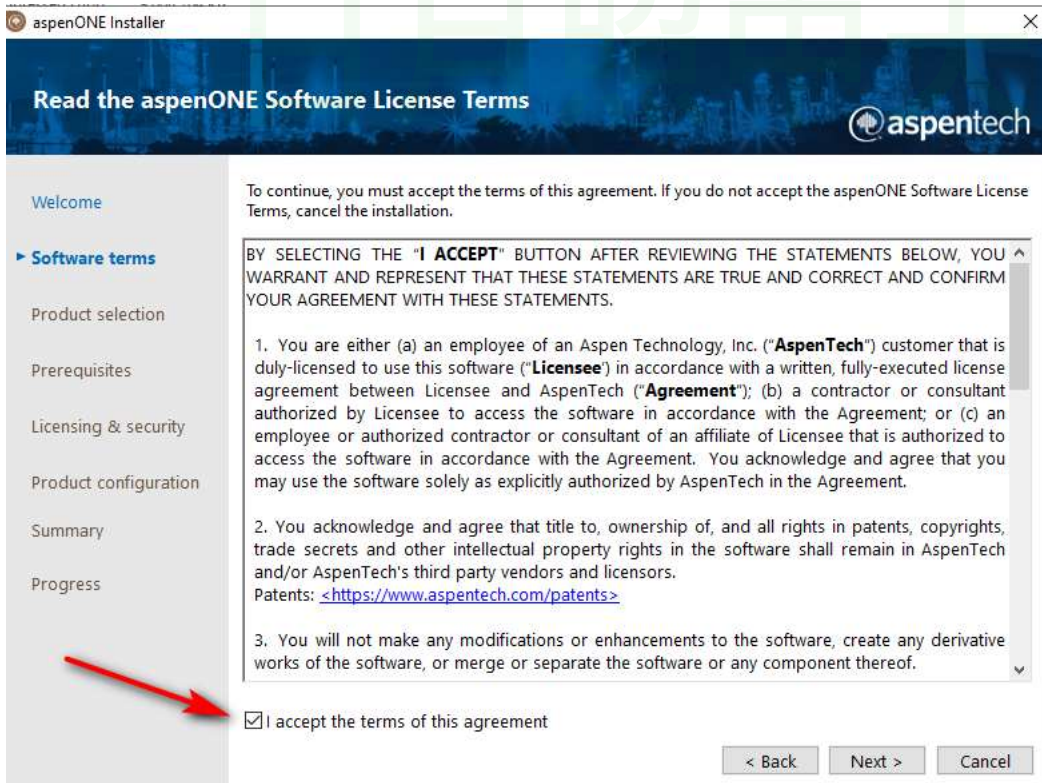
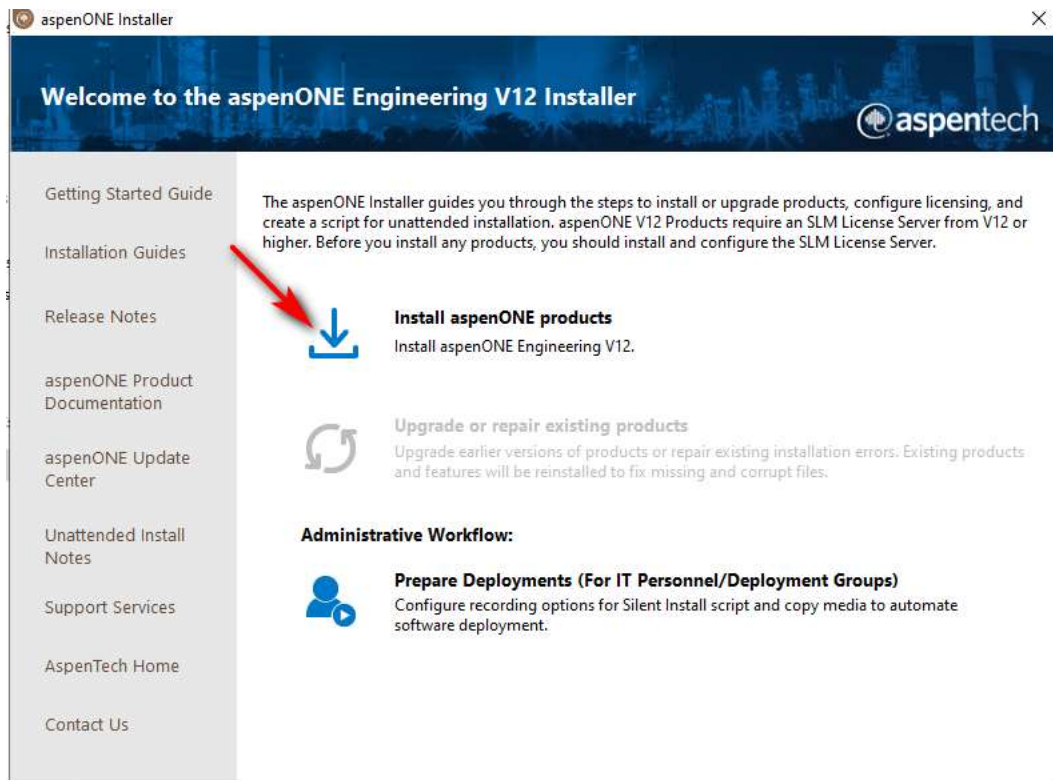


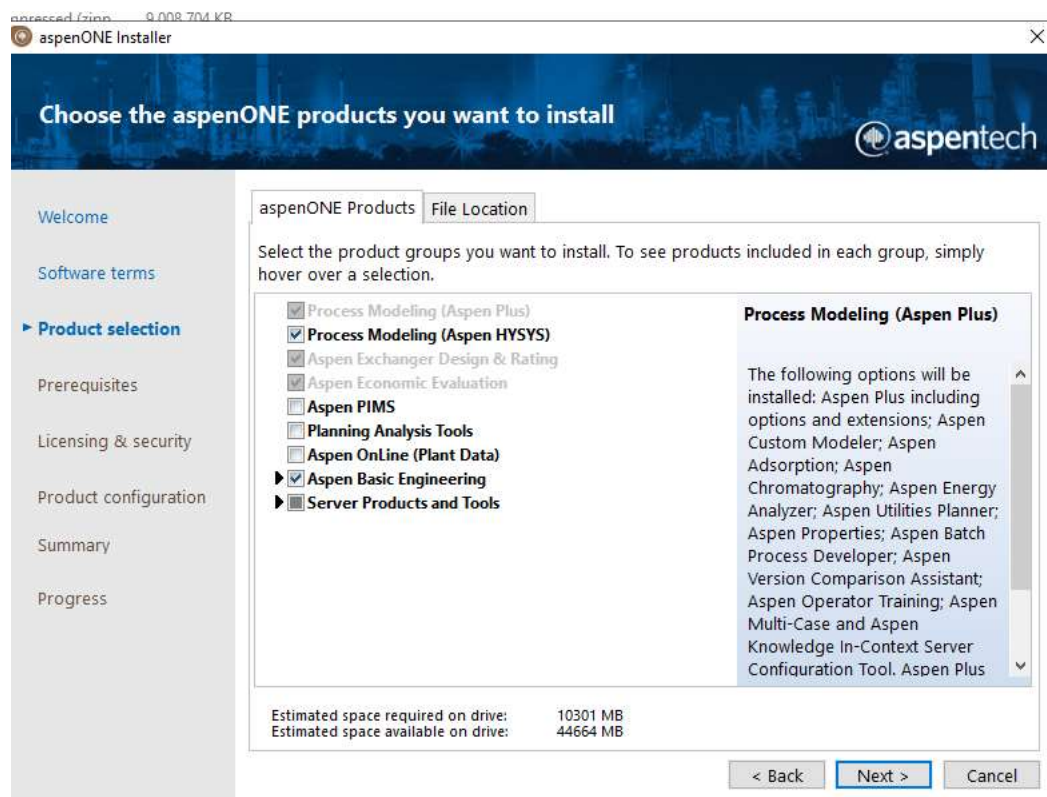
三千多个证书，要等好久时间。我的虚拟机里边等了超过半小时



5, 下一步就可以安装了。我就以安装Aspen-V12-ENG.zip为例，这也是最常用的。解压到一个目录。
• 点击SETUP.







缺失JAVA 8提示，先略过。可能有些功能不能用，你也可以以后再安装。

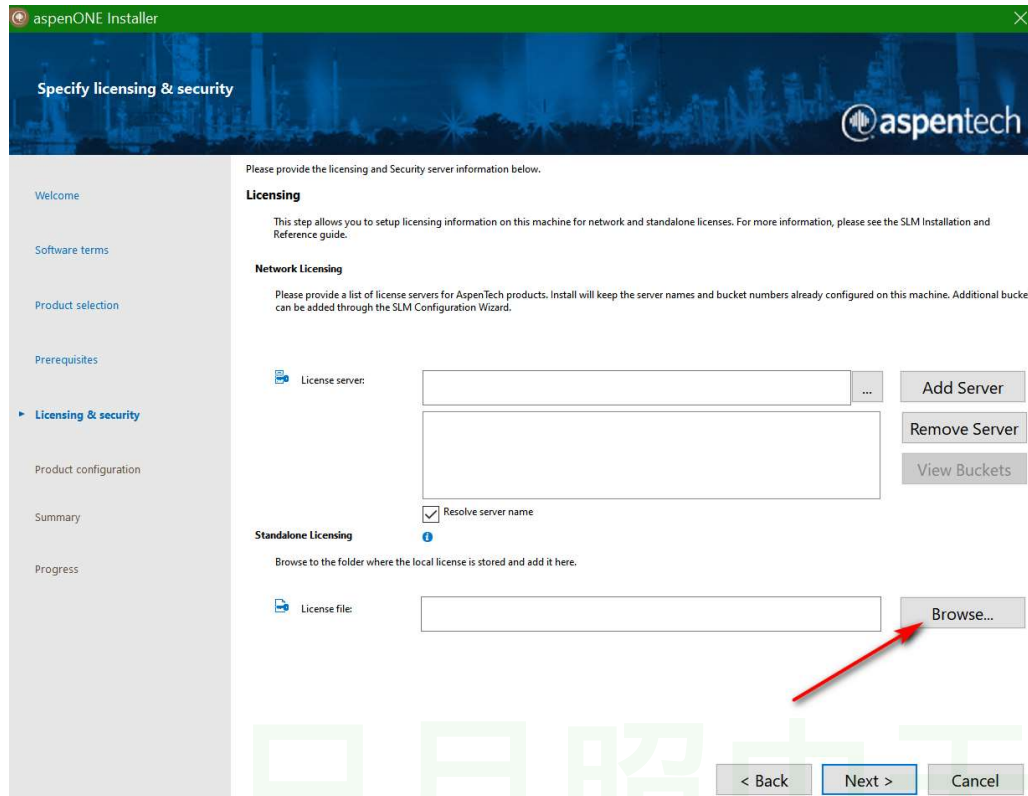
The following prerequisites are required by the products you selected. Some can be installed by clicking **Install Prerequisites**; others must be installed manually before you can proceed.

Status Prerequisite Item

Java 8 64bit

The Primavera link between ACCE and AICE V12 requires installation of Java 8 64 bit. Aspen installer cannot detect a supported Java 8 64bit on this machine. Refer to the [AspenTech Support Site](#) regarding Java 8 64bit support for AspenTech applications. You can proceed with installing Aspen Economic Evaluation and install the JDK at a later point.

指向证书文件



The image shows the 'Specify licensing & security' step of the AspenONE Installer. The window has a green title bar and a blue header with the AspenTech logo. A left sidebar lists installation steps, with 'Licensing & security' selected. The main area is divided into 'Licensing' and 'Standalone Licensing' sections. The 'Licensing' section includes a 'Network Licensing' area with a list of license servers and buttons to add, remove, or view buckets. The 'Standalone Licensing' section has a 'License file' field and a 'Browse...' button. A red arrow points to the 'Browse...' button. At the bottom are '< Back', 'Next >', and 'Cancel' buttons.

aspensONE Installer

Specify licensing & security

Please provide the licensing and Security server information below.

Licensing

This step allows you to setup licensing information on this machine for network and standalone licenses. For more information, please see the SLM Installation and Reference guide.

Network Licensing

Please provide a list of license servers for AspenTech products. Install will keep the server names and bucket numbers already configured on this machine. Additional buckets can be added through the SLM Configuration Wizard.

License server: ...

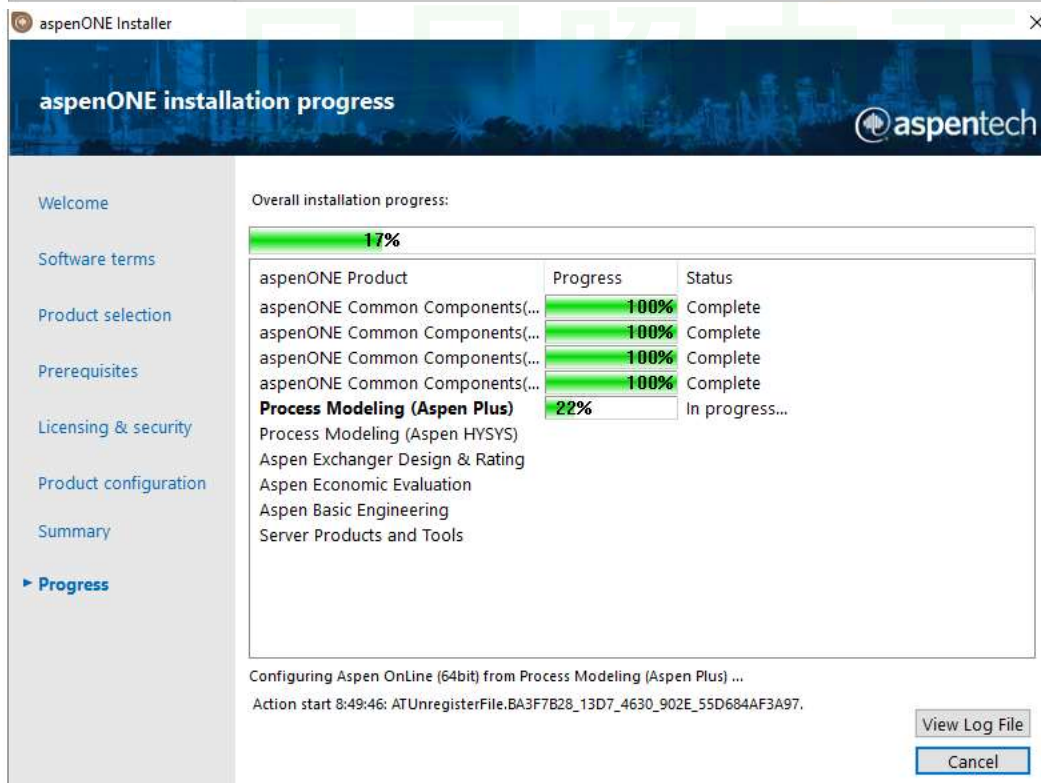
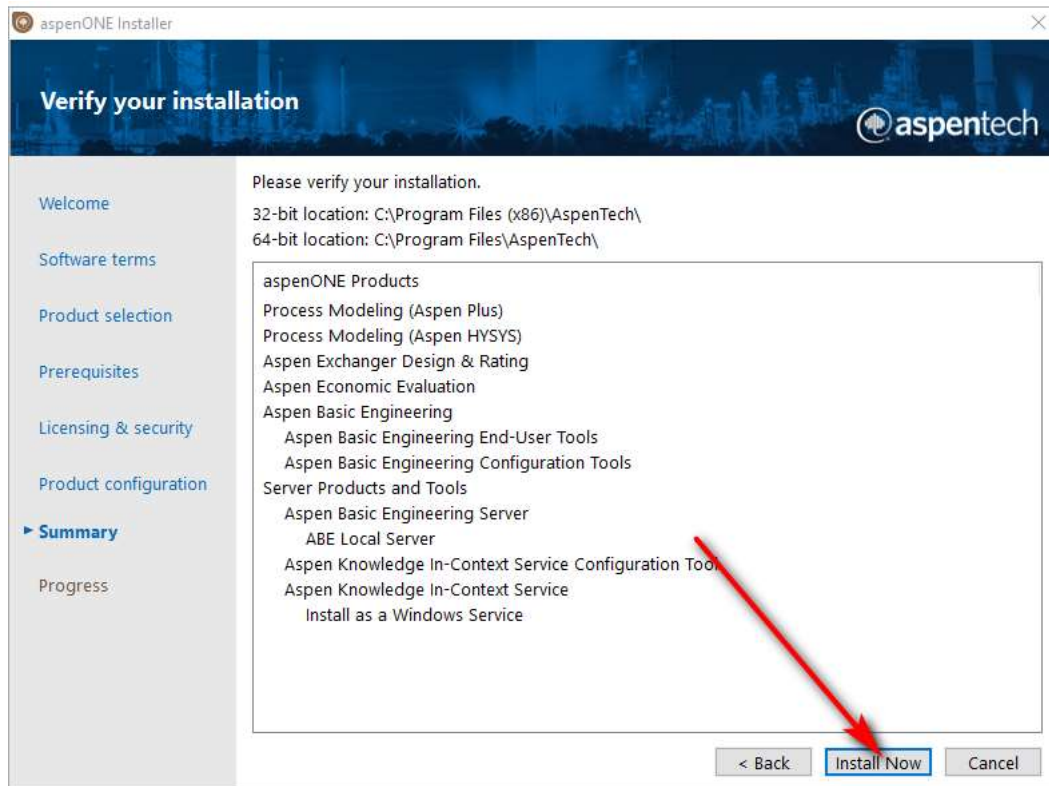
☒ Resolve server name

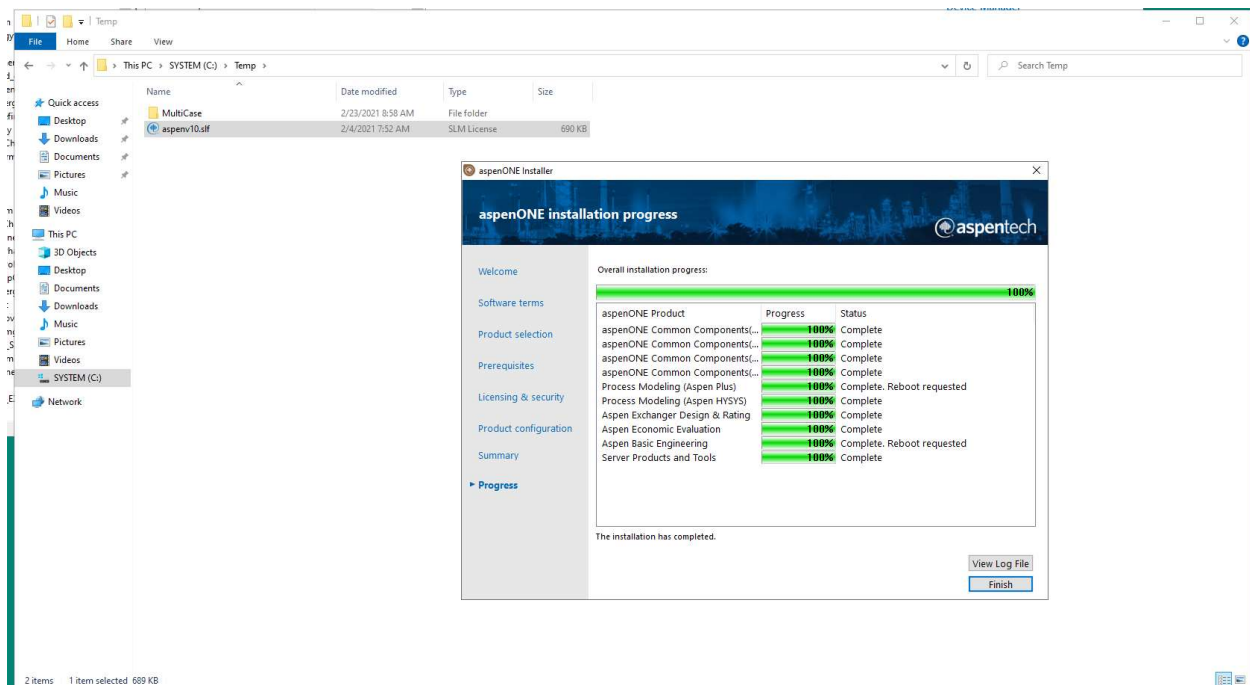
Standalone Licensing

Browse to the folder where the local license is stored and add it here.

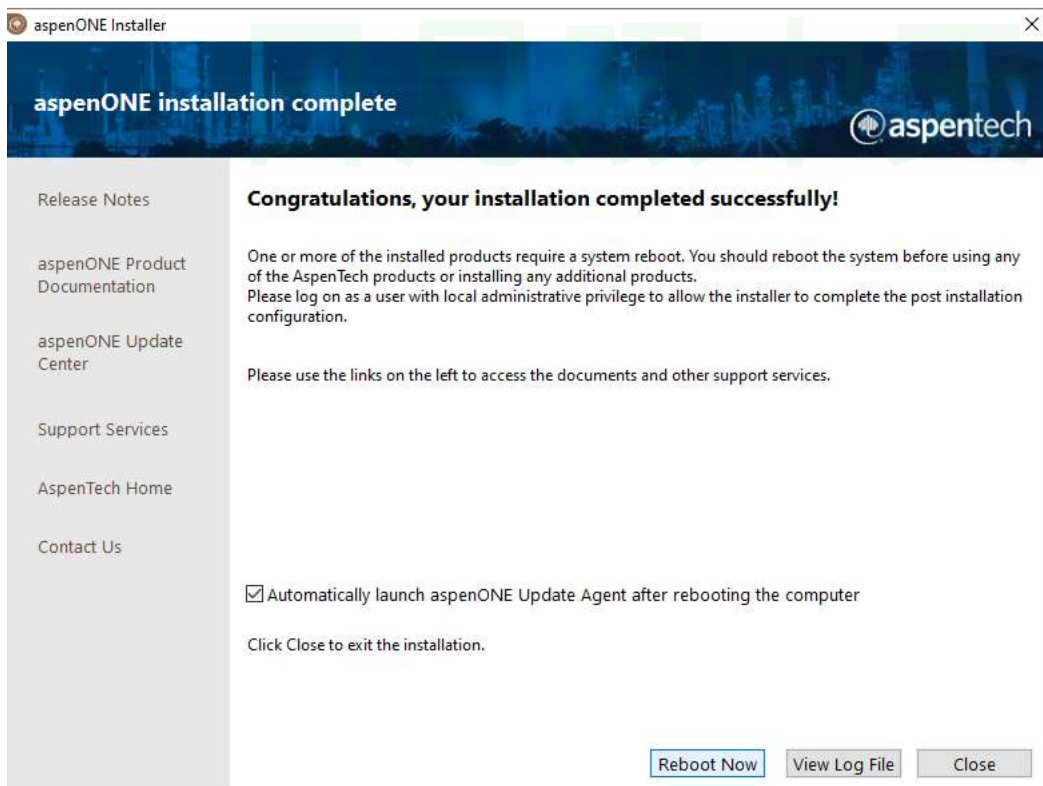
License file:

< Back Next > Cancel

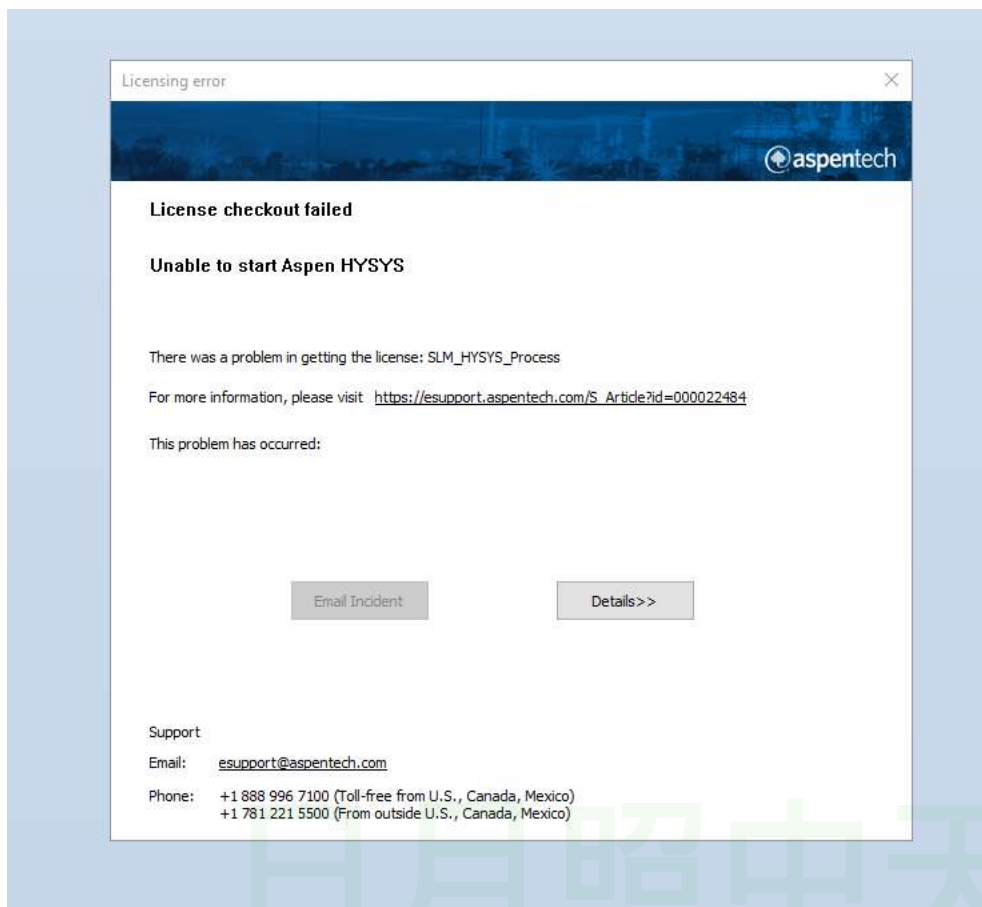




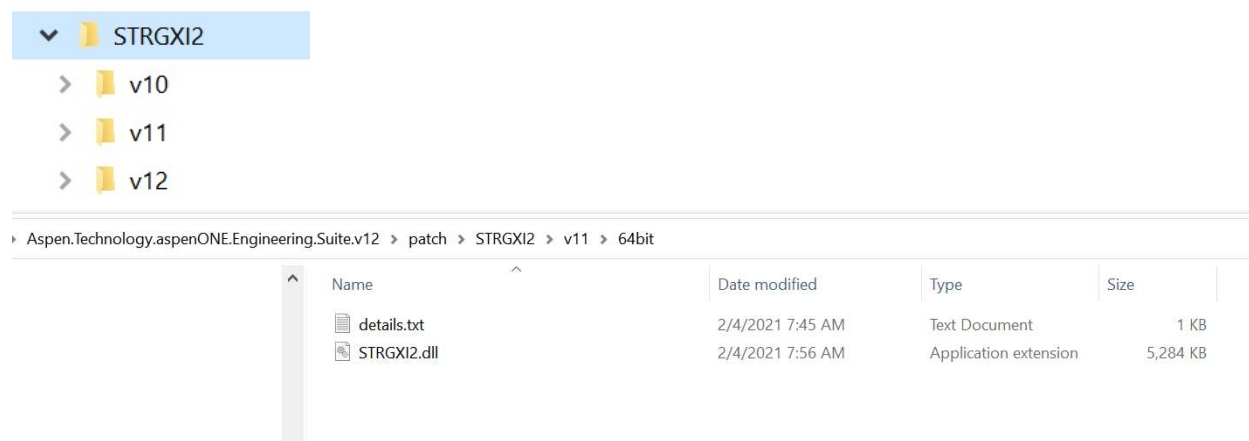
该重启就重启吧。不过要把自动升级关掉。



还是不能用？

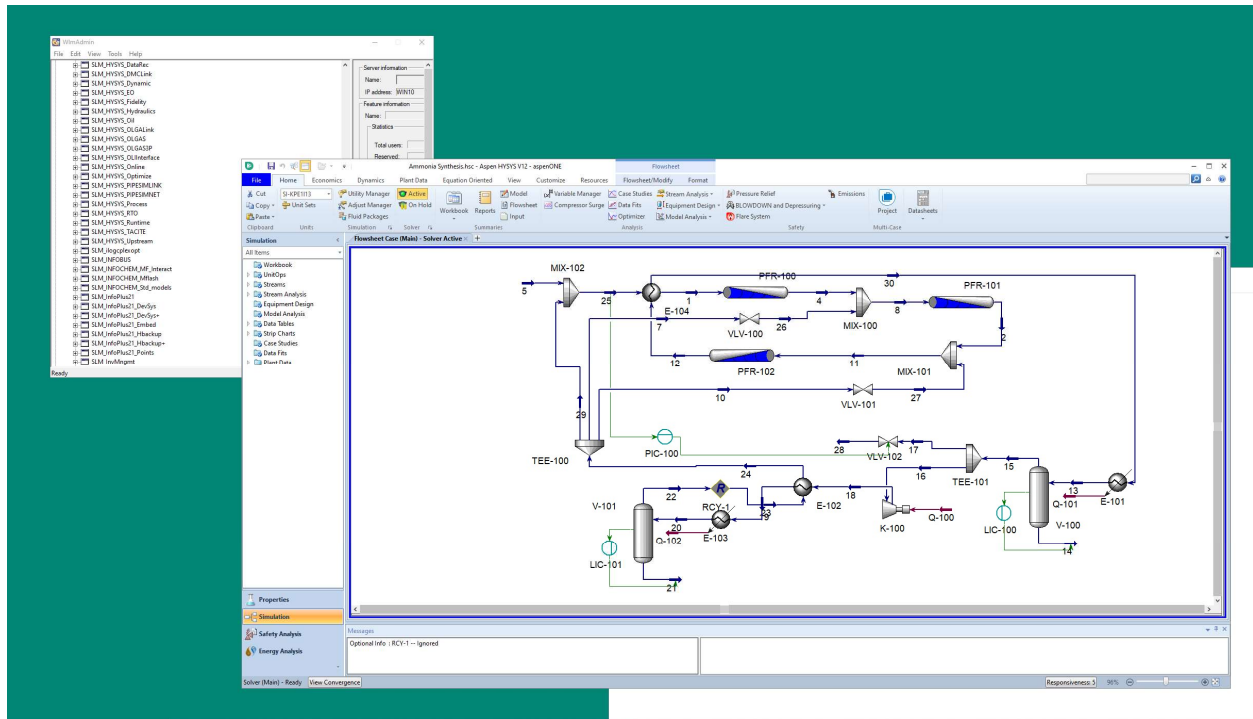


忘掉了最后一步。覆盖DLL文件。



path:
C:\Program Files\Common Files\AspenTech Shared\

File version: 2018.11.1.508



可以用了。注意，每次使用都要重复步骤4，加载证书。很费时间，其实，你可以把那个证书拆开，只加载你要使用的模块。费了近三个小时！