		02605 TH34/DSH 3234/0001
---	--	--------------------------------


Data Sheets of Thermowells

4,700 m³ LEG-/LPG-/Ammonia-CARRIER

Anthony Veder Rederijzaken B.V., Netherlands

Dingheng Shipyard. Hull Nos.: AD0015, AD0016

2	10.12.2012	ISSUED FOR USE	jj	arz	woe
1	30.10.2012	FIRST ISSUED	jj	arz	woe
Rev.	Date	Subject of revision	Author	Checked	Validated

 Marine Gas Engineering	4,700 m ³ LEG-/LPG-/Ammonia-CARRIER Anthony Veder Rederijzaken B.V., Netherlands Dingheng Shipyard. Hull Nos.: AD0015, AD0016	02605 TH34/DSH 3234/0001
Data Sheets of Thermowells		

Revision Matrix

No.	Title	Revision Date															
		1	2														
		30.10.2012	10.12.2012														
1	Cover Sheet	1	2														
2	Revision Matrix	1	2														
3	Thermowell specification TI	1															
4	Thermowell specification TI / TIS	1															
5	Thermowell specification TI / TIS	1	2														
6	Thermowell specification TE	1															
7	Thermowell specification Refrigerant TCV	1															
8	Thermowell Drawing for PT 100: 12966046.02	1															
9	Thermowell Drawing for Thermometer: 12965198.02	1															
10	Thermowell Drawing for Refrigerant TCV	1															



Marine Gas Engineering

Doc. No. 02605/TH34/DSH/3234/0001

4,700 m³ LEG-/LPG-/Ammonia-CARRIER
Anthony Veder Rederijzaken B.V., Netherlands
Dingheng Shipyard. Hull Nos.: AD0015, AD0016

Title Data Sheets of Thermowells

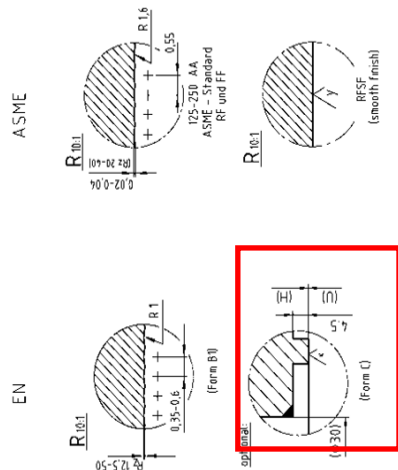
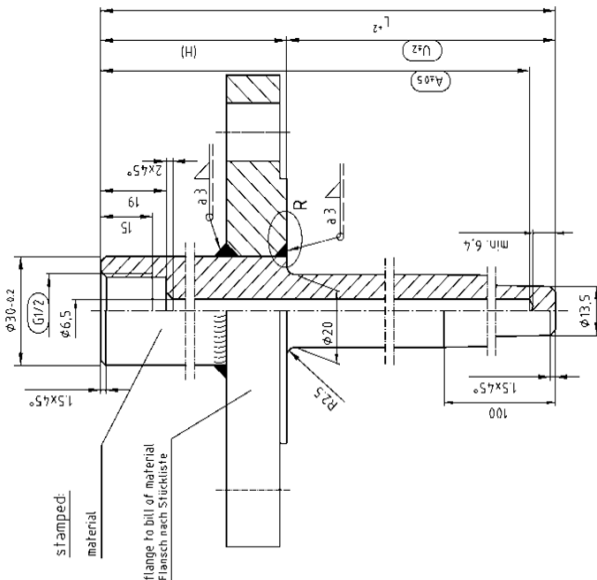
Name Thermowell specification TI / TIS

Supplier: Wika										Type: Thermowell				Manufacturer: Wika				Remark																	
1	2	3	4	5	6	7	8	9	10	11	12	13	14	15	16	17	18			19	20	21	22	23	24	25	26	27	28	29	30	31	32	33	34
TAG		Type	DN	PN	Form	Material DIN ANSI		Conn. Thread			Immersion Length"U"		Drawing																						
T 6201		TI	50	40	B1	1.4408 n.a.		G½ female			277		12965198.02 (Page 9)																						
T 6210		TI	25	40	B1	1.4408 n.a.		G½ female			307		12965198.02 (Page 9)																						
T 7101		TI	25	40	B1	1.4408 n.a.		G½ female			307		12965198.02 (Page 9)																						
T 7102		TI	25	40	B1	1.4408 n.a.		G½ female			307		12965198.02 (Page 9)																						
T 7201		TI	25	40	B1	1.4408 n.a.		G½ female			357		12965198.02 (Page 9)																						
T 7202		TI	25	40	B1	1.4408 n.a.		G½ female			357		12965198.02 (Page 9)																						
T 9152		TI	50	16	B1	1.4408 n.a.		G½ female			307		12965198.02 (Page 9)																						
T 9153		TI	50	16	B1	1.4408 n.a.		G½ female			277		12965198.02 (Page 9)																						
T 9154		TI	50	16	B1	1.4408 n.a.		G½ female			307		12965198.02 (Page 9)																						
T 9157		TI	50	16	B1	1.4408 n.a.		G½ female			307		12965198.02 (Page 9)																						
T 9158		TI	50	16	B1	1.4408 n.a.		G½ female			357		12965198.02 (Page 9)																						
T 9159		TI	50	16	B1	1.4408 n.a.		G½ female			307		12965198.02 (Page 9)																						
T 9161		TI	50	16	B1	1.4408 n.a.		G½ female			307		12965198.02 (Page 9)																						
T 9201		TI	25	40	B1	1.4408 n.a.		G½ female			277		12965198.02 (Page 9)																						
T 9202		TI	25	40	B1	1.4408 n.a.		G½ female			277		12965198.02 (Page 9)																						
T 9206		TI	25	40	B1	1.4408 n.a.		G½ female			277		12965198.02 (Page 9)																						
T 9211		TI	25	40	B1	1.4408 n.a.		G½ female			277		12965198.02 (Page 9)																						
T 9212		TI	25	40	B1	1.4408 n.a.		G½ female			277		12965198.02 (Page 9)																						
T 9221		TI	25	40	B1	1.4408 n.a.		G½ female			277		12965198.02 (Page 9)																						
T 9222		TI	25	40	B1	1.4408 n.a.		G½ female			277		12965198.02 (Page 9)																						
Remark:										Inspection Test / Certificate Bureau Veritas (BV)										- with certificate EN 10204-3.1 (material)															

Data Sheets of Thermowells										Name	Thermowell specification TE		Rev	
Supplier: Wika										Type: Thermowell	Manufacturer: Wika			
1	TAG	Type	DN	PN	Form	Material		Conn. Thread	Immersion		Drawing	Remark		
2						DIN	ANSI			Length"U"				
3	T 1102	TE	25	40	B1	1.4408	n.a.	G½ female		357	12966046.02 (Page 8)			
4	T 1103	TE	25	40	B1	1.4408	n.a.	G½ female		357	12966046.02 (Page 8)			
5	T 1106	TE	25	40	B1	1.4408	n.a.	G½ female		357	12966046.02 (Page 8)			
6	T 1111	TE	25	40	B1	1.4408	n.a.	G½ female		277	12966046.02 (Page 8)			
7	T 1115	TE	25	40	B1	1.4408	n.a.	G½ female		357	12966046.02 (Page 8)			
8														
9	T 1202	TE	25	40	B1	1.4408	n.a.	G½ female		357	12966046.02 (Page 8)			
10	T 1203	TE	25	40	B1	1.4408	n.a.	G½ female		357	12966046.02 (Page 8)			
11	T 1206	TE	25	40	B1	1.4408	n.a.	G½ female		357	12966046.02 (Page 8)			
12	T 1211	TE	25	40	B1	1.4408	n.a.	G½ female		277	12966046.02 (Page 8)			
13	T 1215	TE	25	40	B1	1.4408	n.a.	G½ female		357	12966046.02 (Page 8)			
14														
15	T 6214	TE	25	40	B1	1.4408	n.a.	G½ female		307	12966046.02 (Page 8)			
16														
17	T 7103	TE	25	40	B1	1.4408	n.a.	G½ female		307	12966046.02 (Page 8)			
18	T 7203	TE	25	40	B1	1.4408	n.a.	G½ female		357	12966046.02 (Page 8)			
19														
20	T 3102	TE	25	40	C	1.4408	n.a.	G½ female		307	12966046.02 (Page 8)	with tongue		
21	T 3104	TE	25	40	C	1.4408	n.a.	G½ female		277	12966046.02 (Page 8)	with tongue		
22	T 3111	TE	25	40	C	1.4408	n.a.	G½ female		277	12966046.02 (Page 8)	with tongue		
23	T 3113	TE	25	40	C	1.4408	n.a.	G½ female		277	12966046.02 (Page 8)	with tongue		
24	T 3143	TE	25	40	C	1.4408	n.a.	G½ female		277	12966046.02 (Page 8)	with tongue		
25	T 3163	TE	25	40	C	1.4408	n.a.	G½ female		277	12966046.02 (Page 8)	with tongue		
26														
27	T 3202	TE	25	40	C	1.4408	n.a.	G½ female		307	12966046.02 (Page 8)	with tongue		
28	T 3204	TE	25	40	C	1.4408	n.a.	G½ female		277	12966046.02 (Page 8)	with tongue		
29	T 3211	TE	25	40	C	1.4408	n.a.	G½ female		277	12966046.02 (Page 8)	with tongue		
30	T 3213	TE	25	40	C	1.4408	n.a.	G½ female		277	12966046.02 (Page 8)	with tongue		
31	T 3243	TE	25	40	C	1.4408	n.a.	G½ female		277	12966046.02 (Page 8)	with tongue		
32	T 3263	TE	25	40	C	1.4408	n.a.	G½ female		277	12966046.02 (Page 8)	with tongue		
33														
34	T 9102	TE	50	40	B1	1.4408	n.a.	G½ female		357	12966046.02 (Page 8)			
35	Remark:													
36	Inspection Test / Certificate Bureau Veritas (BV) - with certificate EN 10204-3.1 (material)													

1	30.10.2012	jj	ariz	woe
Rev.	Date	Author	Checked	Validated
2966046.02				
				Rev

1	2	3	4	5	6	7	8	9	0
---	---	---	---	---	---	---	---	---	---



lowest temperature for use -103° C

Oberfläche öl- und fettfrei,
bei Ferriten geeigneter Korrosionsschutz.
Surface free of oil and grease,
for ferritic material use corrosion protection.

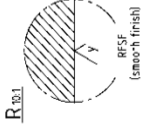
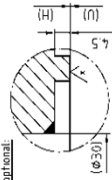
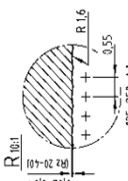
nominal diameter of flange ASME B16.5	nominal diameter of flange EN 1092-1	H mm	L mm	U mm	A mm
1" Flange	DN25 Flange	35	312	277	304,5
1" Flange	DN25 Flange		342	307	334,5
	DN25 Flange		392	357	384,5
2" Flange	DN50 Flange		312	277	306,5
2" Flange	DN50 Flange	37	342	307	336,5
2" Flange	DN50 Flange		394	357	386,5

[illegible][illegible]

Remark:

Inspection Test / Certificate Bureau Veritas (BV)

- with certificate EN 10204-3.1 (material)



Typical


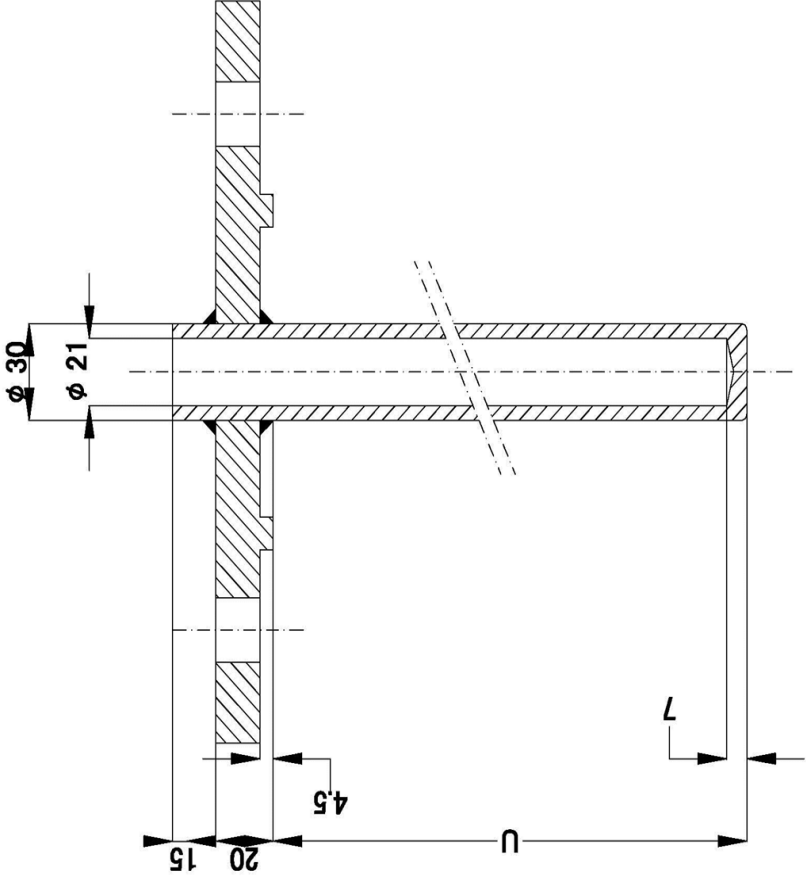
niedrigste Einsatztemperatur -103°C
lowest temperature for use -103°C

Oberfläche öl- und fettfrei,
bei Ferriten geeigneter Korrosionsschutz.
Surface free of oil and grease,
for ferritic material use corrosion protection.

[illegible]

Remark:

Inspection Test / Certificate	Bureau Veritas (BV)
	- with certificate EN 10204-3.1 (material)

		4,700 m³ LEG-/LPG-/Ammonia-CARRIER Anthony Veder Rederijzaken B.V., Netherlands Dingheng Shipyard. Hull Nos.: AD0015, AD0016								
Doc. No.	02605/TH34/DSH/3234/0001									
Title	Data Sheets of Thermowells					Name	Thermowell Drawing for Refrigerant TCV			
Supplier:	Wika					Type:	Thermowell			
						Manufacturer:	Wika			
1	<div style="text-align: center;">  <p>Typical</p> <p>Material: 1.4571</p> </div>									
2										
3										
4										
5										
6										
7										
8										
9										
10										
11										
12										
13										
14										
15										
16										
17										
18										
19										
20										
21										
22										
23										
24										
25										
26										
27										
28										
29										
30										
31										
32										
33										
34										
35	Remark:					Inspection Test / Certificate Bureau Veritas (BV) - with certificate EN 10204-3.1 (material)				
36										